

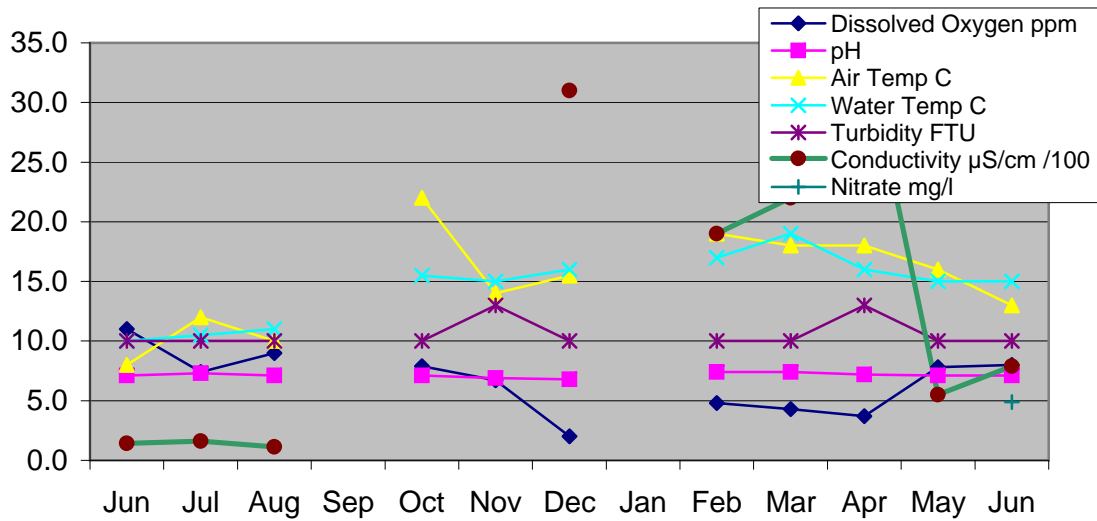
### DAMPER CREEK - East Branch

Location: MW site YDP 035

	Jun	Jul	Aug	Sep	Oct	Nov	Dec	Jan	Feb	Mar	Apr	May	Jun
<b>Water Quality Test</b>	12.6.15	10.7.15	14.8.15		9.10.15	13.11.15	11.12.15	No tests	15.2.16	10.3.16	14.4.16	12.5.16	9.6.16
<i>Time</i>	11.15	10.30	9.20		10.40	10.35	10.30		10.30	10.20	10.20	10.30	10.20
<i>Dissolved Oxy</i> , ml ppm	11.0	7.4	9.0		7.9	6.7	2.0		4.8	4.3	3.7	7.8	8.0
<i>pH</i>	7.1	7.3	7.1		7.1	6.9	6.8		7.4	7.4	7.2	7.1	7.1
<i>Air Temperature</i> , °C	8.0	12.0	10.0		22.0	14.0	15.5		19.0	18.0	18.0	16.0	13.0
<i>Water temperature</i> , °C	10.0	10.5	11.0		15.5	15.0	16.0		17.0	19.0	16.0	15.0	15.0
<i>Conductivity*</i> , µS/cm /100	1.41	1.62	1.14		35.8		31		19	22	34.8	5.5	7.9
<i>Turbidity</i> , NTU	10	10	10		10	13	10		10	10	13	10	10
<i>Soluble Phosp PO<sub>4</sub></i> (ppm), P(ppm)	0.05868	0.0652	0.04238		0.06194		0		0.022	0.065	0.07172	0.039	0.0522
<i>Ammonia-Nitrogen</i> , NH <sub>4</sub> (mg/l)	0.15	0.15	0		0.5	0.4	0.5		0.3	0.5	0.5	0.07	0.1
<i>Nitrate</i> , NO <sub>3</sub> (mg/l)													4.873

\* Multiply by 100 to get actual value

#### Water Quality: East Branch Jun 2015 - Jun 2016



### DAMPER CREEK - North Branch

Location: MW site YDP 037

Water Quality Test	Jun	Jul	Aug	Sep	Oct	Nov	Dec	Dec	Feb	Mar	Apr	May	Jun
Time	12.6.15	10.7.15	14.8.15		9.10.15	13.11.15	11.12.15	No Tests	15.2.16	10.3.16	14.4.16	12.5.16	9.6.16
	10	9.30	8.30		9.40	9.35	9.40		9.40	9.30	9.40	9.00	9.30
Dissolved Oxy, ml ppm	10.6	8.7	8.3		1.8	5.8	1.0		1.2	0.5	2.0	7.7	7.5
pH	7.2	7.5	7.2		7.1	6.3	5.2		6.7	7.0	6.6	6.5	7.1
Air Temperature °C	6.0	11.0	10.0		10.0	15.0	17.0		18.0	20.5		16.0	13.0
Water temperature °C	8.5	9.0	9.5		9.5	16.0	16.5		17.0	19.0	15.0	14.0	12.0
Conductivity* μS/cm /100	2.2	2	3.7		11.3		1.4		1.9	1.9	2.3	2	1.6
Turbidity NTU	10	12	10		50	40	60		32	30	38	10	10
Soluble Phosp PO <sub>4</sub> (ppm), P(ppm)	0.06846	0.08476	0.075		0.153		0		0.1	0.075	0.04	0.05	0.05
Ammonia-Nitrogen NH <sub>4</sub> (mg/l)	0.04	0.03	0		0.02	0.07	0		0.5	0.3	0.14	0.02	0
Nitrate NO <sub>3</sub> (mg/l)													

\* Multiply by 100 to get actual value

#### Water Quality: North Branch Jun 2015 - Jun 2016

