

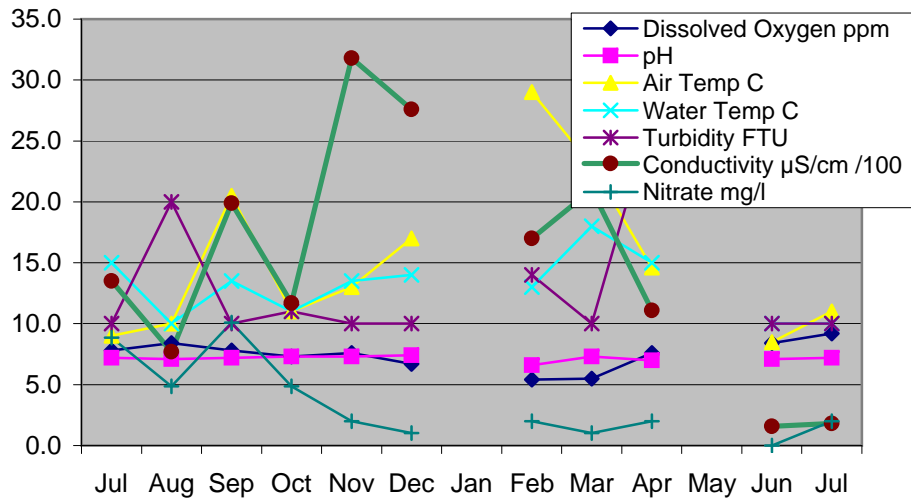
DAMPER CREEK - East Branch

Location: MW site YDP 035

Water Quality Test	Jul	Aug	Sep	Oct	Nov	Dec	Jan	Feb	Mar	Apr	May	Jun	Jul
Time	14.7.16 10.20	11.8.16 10.30	8.9.16 10.30	14.10.16 10.45	10.11.16 10.35	15.12.16 10.30	No tests	9.2.17 10.35	9.3.17 10.55	12.4.17 10.30	No Measure	8.6.17 10.30	13.7.17 10.20
Dissolved Oxy, ml ppm	7.8	8.4	7.8	7.3	7.6	6.7		5.4	5.5	7.6		8.4	9.2
pH	7.2	7.1	7.2	7.3	7.3	7.4		6.6	7.3	7.0		7.1	7.2
Air Temperature °C	9.0	10.0	20.5	11.0	13.0	17.0		29.0	23.0	14.6		8.5	11.0
Water temperature °C	15.0	10.0	13.5	11.0	13.5	14.0		13.0	18.0	15.0		10.0	10.0
Conductivity* μS/cm /100	13.5	7.7	19.9	11.7	31.8	27.6		17	21	11.1		1.57	1.8
Turbidity NTU	10	20	10	11	10	10		14	10	27		10	10
Soluble Phosp PO ₄ (ppm), P(ppm)	0.134	0.059	0.05	0.04	0.04	0.03		0.078	0.022	0.082		0.0293	0.05868
Ammonia-Nitrogen NH ₄ (mg/l)	0.4	0.5	0.4	0.3	0.5	0.35		0.5	0.5	0.3		0.07	0.07
Nitrate NO ₃ (mg/l)	8.86	4.87	10.1	4.87	1.9935	1.0189		1.999	1.02	2		0	1.9935

* Multiply by 100 to get actual value

Water Quality: East Branch Jul 2016 - Jul 2017



DAMPER CREEK - North Branch

Location: MW site YDP 037

	Jul	Aug	Sep	Oct	Nov	Dec	Jan	Feb	Mar	Apr	May	Jun	Jul
Water Quality Test	14.7.16	11.8.16	8.9.16	14.10.16	10.11.16	15.12.16	No Tests	9.2.17	9.3.17	12.4.17	No	8.6.17	13.7.17
<i>Time</i>	9.30	9.40	9.40	9.45	9.40	9.40		9.40	10.05	9.45	Measure	9.40	9.40
<i>Dissolved Oxy</i> , ml ppm	8.8	8.4	8.2	7.3	1.5	0.8		2.7	0.0	7.5		8.8	9.0
<i>pH</i>	6.9	6.8	7.2	7.4	7.1	6.9		6.8	6.9	7.0		7.3	7.2
<i>Air Temperature</i> , °C	7.0	9.0	20.0	11.0	13.0	15.0		29.0	22.0	14.0		8.0	9.0
<i>Water temperature</i> , °C	9.0	9.0	13.0	11.0	13.0	14.0		21.0	16.5	13.5		8.0	10.0
<i>Conductivity*</i> , µS/cm /100	1.7	1.5	1	6.6	5.2	4.7		5.8	3.5	3.2		2.5	1.8
<i>Turbidity</i> , NTU	22	25	17	10	10	10		25	50	10		10	10
<i>Soluble Phosp PO₄</i> (ppm), P(ppm)	0.02	0.059	0.059	0.12	0.104	0.085		0.05	0.01	0.033		0.0619	0.052
<i>Ammonia-Nitrogen</i> , NH ₄ (mg/l)	1.02	0	0	0.02	0.3	0.5		0.04	0	0.04		0.01	0.01
<i>Nitrate</i> , NO ₃ (mg/l)		1.99	1.02	2	0	0		1.02	0	0		0	0

* Multiply by 100 to get actual value

Water Quality: North Branch Jul 2016 - Jul 2017

