

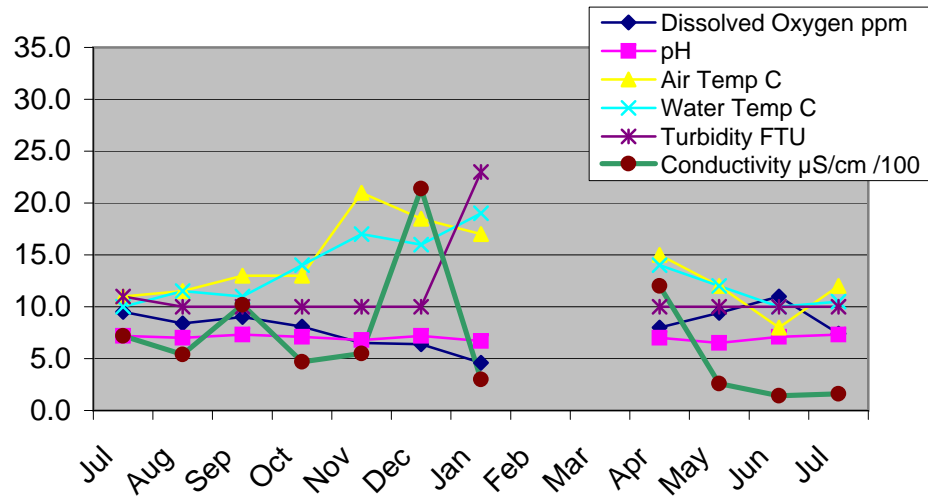
## DAMPER CREEK - East Branch

Location: MW site YDP 035

	Jul	Aug	Sep	Oct	Nov	Dec	Jan	Feb	Mar	Apr	May	Jun	Jul
<b>Water Quality Test</b>	11.7.14	8.8.14	12.9.14	13.10.14	21.11.14	12.12.14	9.1.15	No Tests	No tests	10.4.15	15.5.15	12.6.15	10.7.15
<i>Time</i>	10.20	9.55	10.30	10.55	10.30	10.00	10.30			10.20	9.40	11.15	10.30
<i>Dissolved Oxy</i> , ml ppm	9.5	8.4	9.0	8.1	6.5	6.4	4.6			8.0	9.4	11.0	7.4
<i>pH</i>	7.2	7.0	7.3	7.1	6.8	7.2	6.7			7.0	6.5	7.1	7.3
<i>Air Temperature</i> , °C	11.0	11.5	13.0	13.0	21.0	18.5	17.0			15.0	12.0	8.0	12.0
<i>Water temperature</i> , °C	10.0	11.5	11.0	14.0	17.0	16.0	19.0			14.0	12.0	10.0	10.5
<i>Conductivity*</i> , µS/cm /100	7.2	5.4	10.2	4.7	5.5	21.4	3			12	2.6	1.41	1.62
<i>Turbidity</i> , NTU	11	10	10	10	10	10	23			10	10	10	10
<i>Soluble Phosp</i> PO <sub>4</sub> (ppm), P(ppm)	0.1826	0.03586	0.03586	0.0326	0.02934	0.10106	0.05542			0.05542	0.00652	0.05868	0.0652
<i>Ammonia-Nitrogen</i> , NH <sub>4</sub> (mg/l)	0.5	0.5	0.3	0.15	0.1	0.4	0.3			0.15	0.04	0.15	0.15
<i>Chlorine</i>													

\* Multiply by 100 to get actual value

### Water Quality: East Branch Jul 2014 - Jul 2015



## DAMPER CREEK - North Branch

Location: MW site YDP 037

	Jul	Aug	Sep	Oct	Nov	Dec	Jan	Feb	Mar	Apr	May	Jun	Jul
<b>Water Quality Test</b>	11.7.14	8.8.14	12.9.14	13.10.14	21.11.14	12.12.14	9.1.15	No Tests	No tests	10.4.15	15.5.15	12.6.15	10.7.15
<i>Time</i>	9.40	9.20	9.40	10.05	9.40	9.30	9.30			9.30	10.20	10	9.30
<i>Dissolved Oxy</i> , ml ppm	10.0	9.6	9.0	9.0	7.0	0.5	4.7			5.8	8.2	10.6	8.7
<i>pH</i>	7.1	6.9	7.1	7.1	6.7	7.2	6.2			6.7	6.7	7.2	7.5
<i>Air Temperature</i> , °C	11.0	11.0	10.0	14.0	19.0	18.0	18.0			14.0	12.5	6.0	11.0
<i>Water temperature</i> , °C	10.0	10.5	10.0	13.0	18.0	16.0	19.5			12.0	13.0	8.5	9.0
<i>Conductivity*</i> , µS/cm /100	1.7	1.9	3.5	6.4	2.7	3.8	1.2			3.1	5	2.2	2
<i>Turbidity</i> , NTU	10	10	10	10	10	25	38			10	10	10	12
<i>Soluble Phosp</i> PO <sub>4</sub> (ppm), P(ppm)	0.1141	0.0359	0.07122	0.18582	0.1826	0.20864	0.08476			0.08476	0.02608	0.06846	0.08476
<i>Ammonia-Nitrogen</i> , NH <sub>4</sub> (mg/l)	0	0	0.15	0.4	0	0	0.35			0.45	0.1	0.04	0.03
<i>Chlorine</i>													

\* Multiply by 100 to get actual value

### Water Quality: North Branch Jul 2014 - Jul 2015

