

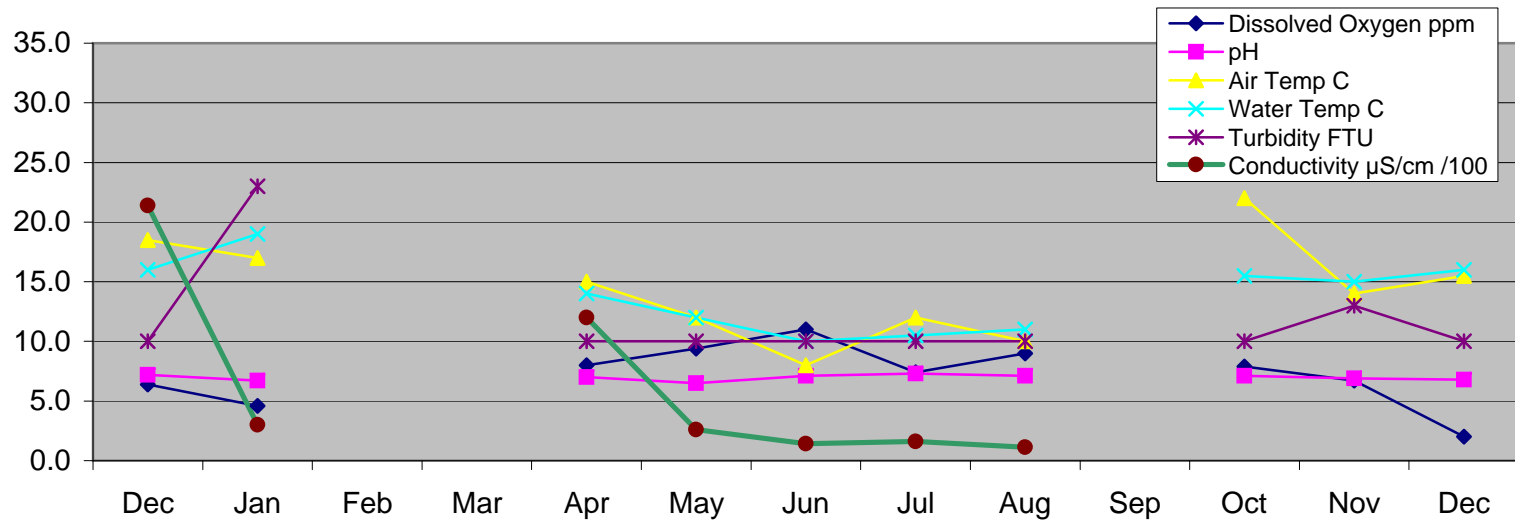
DAMPER CREEK - East Branch

Location: MW site YDP 035

Water Quality Test	Dec 12.12.14	Jan 9.1.15	Feb	Mar	Apr 10.4.15	May 15.5.15	Jun 12.6.15	Jul 10.7.15	Aug 14.8.15	Sep	Oct 9.10.15	Nov 13.11.15	Dec 11.12.15
Time	10.00	10.30			10.20	9.40	11.15	10.30	9.20		10.40	10.35	10.30
Dissolved Oxy, ml ppm	6.4	4.6			8.0	9.4	11.0	7.4	9.0		7.9	6.7	2.0
pH	7.2	6.7			7.0	6.5	7.1	7.3	7.1		7.1	6.9	6.8
Air Temperature °C	18.5	17.0			15.0	12.0	8.0	12.0	10.0		22.0	14.0	15.5
Water temperature °C	16.0	19.0			14.0	12.0	10.0	10.5	11.0		15.5	15.0	16.0
Conductivity* μS/cm /100	21.4	3			12	2.6	1.41	1.62	1.14		35.8		31
Turbidity NTU	10	23			10	10	10	10	10		10	13	10
Soluble Phosp PO ₄ (ppm), P(ppm)	0.10106	0.05542			0.05542	0.00652	0.05868	0.0652	0.04238		0.06194		0
Ammonia-Nitrogen NH ₄ (mg/l)	0.4	0.3			0.15	0.04	0.15	0.15	0		0.5	0.4	0.5
Chlorine													

* Multiply by 100 to get actual value

Water Quality: East Branch Dec 2014 - Dec 2015



DAMPER CREEK - North Branch

Location: MW site YDP 037

Water Quality Test	Dec 12.12.14	Jan 9.1.15	Feb	Mar	Apr 10.4.15	May 15.5.15	Jun 12.6.15	Jul 10.7.15	Aug 14.8.15	Sep	Oct 9.10.15	Nov 13.11.15	Dec 11.12.15
Time	9.30	9.30	No Tests	No tests	9.30	10.20	10	9.30	8.30		9.40	9.35	9.40
Dissolved Oxy, ml ppm	0.5	4.7			5.8	8.2	10.6	8.7	8.3		1.8	5.8	1.0
pH	7.2	6.2			6.7	6.7	7.2	7.5	7.2		7.1	6.3	5.2
Air Temperature °C	18.0	18.0			14.0	12.5	6.0	11.0	10.0		10.0	15.0	17.0
Water temperature °C	16.0	19.5			12.0	13.0	8.5	9.0	9.5		9.5	16.0	16.5
Conductivity* μS/cm /100	3.8	1.2			3.1	5	2.2	2	3.7		11.3		1.4
Turbidity NTU	25	38			10	10	10	12	10		50	40	60
Soluble Phosp PO ₄ (ppm), P(ppm)	0.20864	0.08476			0.08476	0.02608	0.06846	0.08476	0.075		0.153		0
Ammonia-Nitrogen NH ₄ (mg/l)	0	0.35			0.45	0.1	0.04	0.03	0		0.02	0.07	0
Chlorine													

* Multiply by 100 to get actual value

Water Quality: North Branch Dec 2014 - Dec 2015

